

## Pallet for shipping a Little Giant power hammer

### Supplies needed:

5) 48" long 4x4's

2) sheets of plywood, 48"x 48" 1/2 inch thick

6) 3/8"x 10" carriage bolts

2) 3/8"x 8" carriage bolts

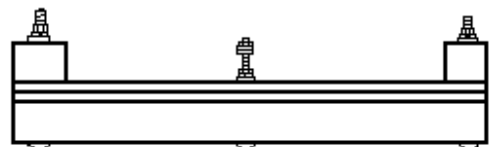
Washers, lock washers & nuts to fit bolts

Approximately 12' light weight (approx. 1/4" link) chain

- Drill all holes 1/2" (you will need a long bit to get through both 4x4's)
- Bolt together securely with the carriage bolts
- Center the Little Giant on the pallet
- Bolt Little Giant to pallet
- Wrap chain around frame of Little Giant (between bearing uprights and the portion of the frame shaped like a C). Secure chain to side carriage bolts, tightening down with washers and nuts.



**Pallet-Front View**



**Pallet-Side View**